

Fresh, fragrant and clean air is unfortunately no longer a matter of course today. The advances in technology through industry, increasing traffic or other polluting influences are becoming more and more noticeable and affect our everyday lives. Health complaints such as headaches, nausea, general malaise and the so-called "sick building syndrome" are the consequences.

These symptoms are mainly caused by indoor air pollution, which would be:

- Unpleasant odor molecules
- Viruses and bacteria
- Pathogens and germs
- VOCs (Gases)
- Fungal spores and microorganisms
- Dust and other harmful particles

The channel modules from ARS are perfectly suited to be installed in existing or new air conditioning and ventilation systems or supply and exhaust air ducts. In this way, they do their job almost invisibly, but reliably.

If the installation situation does not allow larger devices to be used, these small channel modules almost always find a little space.

**The principle** of action is based on a natural process. The sun in general or lightning bolts generate positively and negatively charged small ions through electrical discharges from neutral oxygen molecules. We reproduce this process with our ionization tubes and use the positive effects specifically for you.

## ARS channel modules

### General

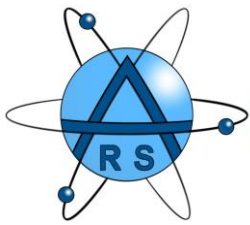
<b>Areas of application</b>	Air conditioning and ventilation systems, supply and exhaust air ducts in industrial and administrative buildings, offices, trains, planes, ships, buses, etc.
<b>Fuse</b>	1 x 0.5A
<b>Power consumption</b>	5-10W, depending on the tube length
<b>Height in the air duct [mm]</b>	According to the tube length

Possible types of ionization tubes	No. of tubes	C	D	E	F
<b>Air performance [m³/h]</b>	1	250	380	620	990
	2	400	720	1120	1800
	3	670	1000	1650	2640

### GHM-250

	<b>Dimensions LxWxH [mm]</b>	70 x 60 x 70 (without tubes)
	<b>Flow</b>	Vmax = 20 m/s
	<b>Air flow through tube</b>	Vmin = 4 - 20 m/s
	<b>Mounting</b>	Frontal with installation frame
	<b>Weight</b>	Approx. 750g
	<b>Accessories / scope of delivery</b>	Standard delivery without frame and tube
	<b>Associated frame</b>	305210

Power connection	Article number	Power connection	Article number
100V, 50/60Hz	305085	230V, 50/60Hz CH-Plug	305089
120V, 50/60Hz	305087	230V, 50/60Hz EU-Plug	305088



## GHM-400



<b>Dimensions LxWxH [mm]</b>	70 x 60 x 70 (without tubes)
<b>Flow</b>	Vmax = 20 m/s
<b>Air flow through tube</b>	Vmin = 4 - 20 m/s
<b>Mounting</b>	At the side with screws
<b>Weight</b>	Approx. 750g
<b>Accessories / scope of delivery</b>	Standard delivery without tube

Power connection	Article number	Power connection	Article number
100V, 50/60Hz	305092	230V, 50/60Hz CH-Plug	305090
120V, 50/60Hz	305093	230V, 50/60Hz EU-Plug	305091

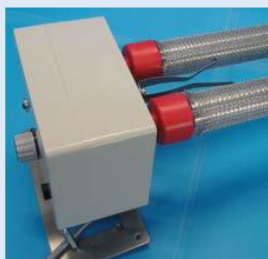
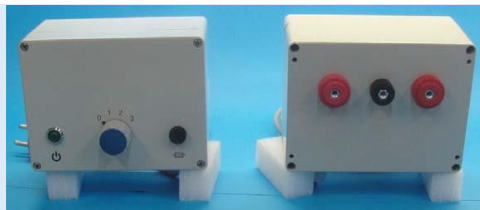
## GHM-500



<b>Dimensions LxWxH [mm]</b>	160 x 80 x 85 (95) (without tubes)
<b>Flow</b>	Vmax = 15 m/s
<b>Air flow through tube</b>	Vmin = 2 - 15 m/s
<b>Mounting</b>	Frontal with screws
<b>Operating indicator</b>	2 x green LED
<b>Weight</b>	Approx. 1.85kg
<b>Accessories / scope of delivery</b>	Standard delivery without tubes
<b>Associated frame</b>	305220

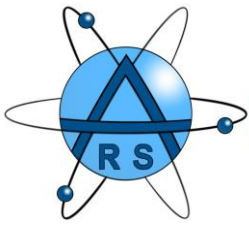
Power connection	Article number	Power connection	Article number
100V, 50/60Hz	305095	230V, 50/60Hz CH-Plug	305098
120V, 50/60Hz	305097	230V, 50/60Hz EU-Plug	305099

## GHM-600

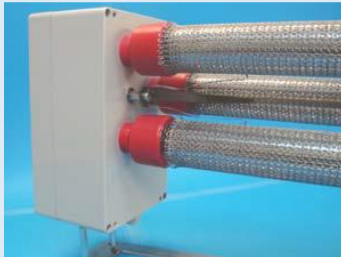


<b>Dimensions LxWxH [mm]</b>	160 x 90 x 120 (without tubes)
<b>Flow</b>	Vmax = 12 m/s
<b>Air flow through tube</b>	Vmin = 2 - 12 m/s
<b>Mounting</b>	At the side with installation frame
<b>Operating indicator</b>	1 x green LED
<b>Weight</b>	Approx. 2.1kg
<b>Accessories / scope of delivery</b>	<ul style="list-style-type: none"> <li>Standard delivery with installation frame, but without tube</li> <li>Including 3-position switch</li> </ul>
<b>Associated frame</b>	305225

Power connection	Article number	Power connection	Article number
100V, 50/60Hz	305110	230V, 50/60Hz CH-Plug	305114
120V, 50/60Hz	305112	230V, 50/60Hz EU-Plug	305116



## GHM-630



<b>Dimensions LxWxH [mm]</b>	120 x 90 x 200 (without tubes)
<b>Flow</b>	V <sub>max</sub> = 12 m/s
<b>Air flow through tube</b>	V <sub>min</sub> = 2 - 12 m/s
<b>Mounting</b>	At the side with installation frame
<b>Operating indicator</b>	1 x green LED
<b>Weight</b>	Approx. 2.25kg
<b>Accessories / scope of delivery</b>	<ul style="list-style-type: none"> <li>• Standard delivery with installation frame, but without tube</li> <li>• Including 3-position switch</li> </ul>
<b>Associated frame</b>	305230

Power connection	Article number	Power connection	Article number
100V, 50/60Hz	305120	230V, 50/60Hz CH-Plug	305124
120V, 50/60Hz	305122	230V, 50/60Hz EU-Plug	305126

We are at your disposal for additional information material, open questions about the technology or other devices, as well as for a consultation. Just contact us!